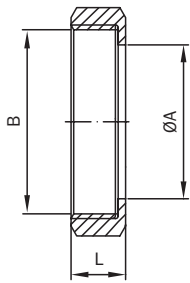
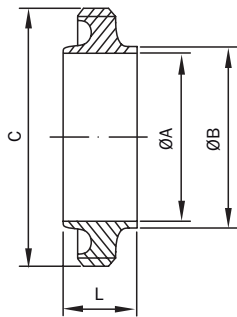


## RJT Union



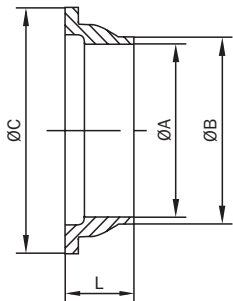
### Hex Nut - BS4825: PART 5 RJT

Size mm DN	A	B	L	Weight [kg]	AISI 304 Article No.
1"	33.45	42.26 X 8	22.2	0.13	26373
1 1/2"	46	54.96 X 8	22.2	0.18	26410
2"	58.67	67.92 X 6	22.2	0.27	26411
2 1/2"	71.4	80.62 X 6	22.2	0.33	26194
3"	84.1	93.32 X 6	22.2	0.39	26195
4"	109.7	118.72 X 6	22.2	0.50	26196



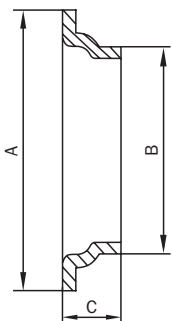
### Male - BS4825: PART 5 RJT

Size mm DN	A	B	C	L	Weight [kg]	AISI 316L Article No.
1"	22.1	25.4	45.72 X 8	27	0.12	26215
1 1/2"	34.8	38.1	58.42 X 8	27	0.17	26216
2"	47.5	50.8	72.72 X 6	27	0.25	26217
2 1/2"	60.2	63.5	85.42 X 6	27	0.28	26218
3"	72.9	76.2	98.12 X 6	27	0.33	26219
4"	97.6	101.6	123.52 X 6	27	0.45	26220



### Liner (machined) - BS4825: PART 5 RJT

Size mm DN	A	B	C	L	Weight [kg]	AISI 316L Article No.
1"	22.2	25.4	41.3	19.5	0.01	60001
1 1/2"	34.8	38.1	54	19.5	0.04	60002
2"	47.5	50.8	66.7	19.5	0.05	60003
2 1/2"	60.2	63.5	79.4	19.5	0.07	60004
3"	72.9	76.2	92.1	19.5	0.08	60005
4"	97.6	101.6	117.5	19.5	0.10	60006



### Liner (pressed from sheet) RJT

Size mm DN	A	B	C	Weight [kg]	AISI 316L Article No.
1"	41.3	32.5	12.7	0.01	26197
1 1/2"	54	45.2	12.7	0.04	26198
2"	66.7	58	12.7	0.05	26199
2 1/2"	79.4	70.6	12.7	0.07	26200
3"	92.1	83.5	12.7	0.08	26201
4"	117.5	108.3	12.7	0.10	26202