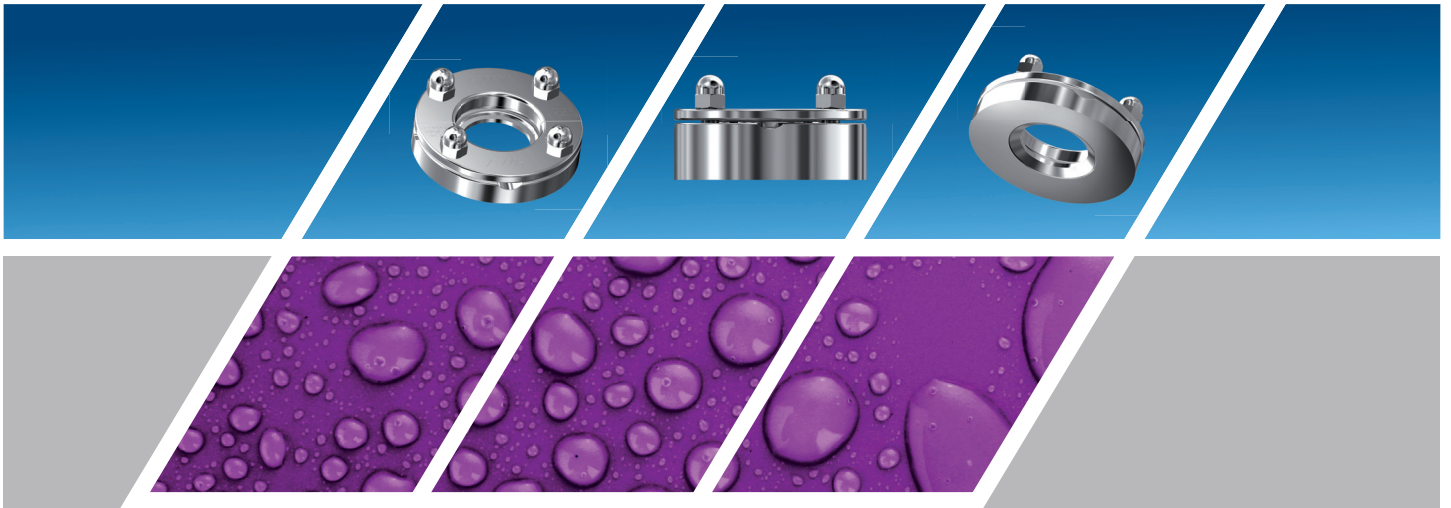


# AWH-Connect



Member of NEUMO-Ehrenberg-Group

"A must for clean vessels – AWH-Connect"

## The aseptic connection for vessels

AWH-Connect is the aseptic and hygienic connection for your vessels. It was developed for the strict requirements of the pharmaceutical and biotechnological industry as well as those of the food industry.

With the use of AWH-Connect in place of classic clamp connections you eliminate or minimize dead space in vessels.

AWH-Connect combines the standard seal of a clamp connection, e.g. per DIN 32676 or ASME-BPE, with the advantages of a block flange, which is welded into the wall of the vessel. This makes it possible to connect a component on a vessel flush to the wall, close to the product and, above all, free of dead space.

### The positive effect of the AWH-Connect is obvious!

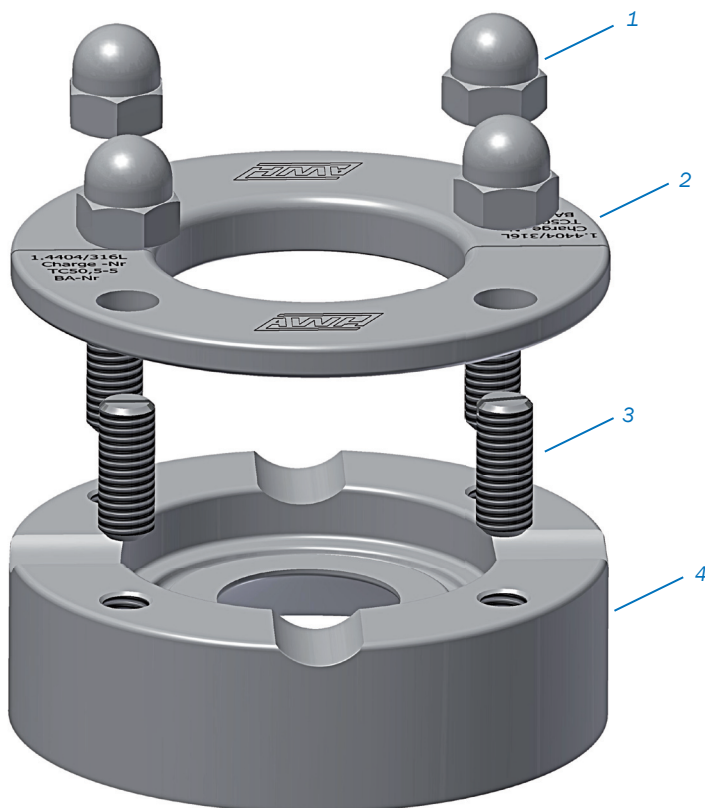
The time and costs for cleaning and sterilization (CIP/SIP) of vessels can be considerably reduced. The cleaning results are visibly better and the validation of the CIP/SIP processes is simpler.

Connect has been field-tested as a vessel connection and is an accepted connection which can be found in the ASME-BPE.

Don't make any compromises and use the original AWH-Connect. There is a variety of reasons for this.

### AWH-Connect design

1. Cap nuts
2. Split ring for easy assembly/disassembly of components
3. Threaded bolts
4. Block flange with seal contour according to the standard for welding in vessels



AWH-Connect  
Design and Advantages

## Good reasons for the user

- proven aseptic design
- minimizes/eliminates dead space
- no spray shadows
- simple, reliable CIP/SIP of vessels
- use of customary seals
- increased safety for the operator
- simple handling due to the split ring
- 100% traceability from finished part to the original material
- meets the requirements of ASME-BPE (Bioprocessing Equipment)



## Good reasons for the vessel manufacturer

- design certified according to PED 97/23/EC by TÜV Nord
- design available in accordance with AD2000 regulations and EN 13445
- welded flange and split ring material certified in accordance with AD2000-W2 and ASME II
- surfaces with product contact as standard  $Ra \leq 0.5 \mu\text{m}$ /other surfaces  $Ra \leq 1.2 \mu\text{m}$
- acceptance test certificate 3.1 – EN 10204 available for all AWH-Connect components
- cost-effective
- large variety of sizes and pipe standards
- welded flange heights from 12 to 51 mm



## High quality at an attractive price

- design test certificate from TÜV Nord included
- manufactured in Germany
- ISO 9001-certified production plant and quality assurance
- development, production and distribution from a single source
- standardised production processes for fast delivery



## As a connection for cleaning equipment

- ideal for the insertion of spray heads or surge cleaners, such as the AWH TANKO<sup>®</sup> S, via the downpipe
- free of dead space
- reliable cleaning and sterilization



## As a connection for sampling valves and systems

- connection of sampling valves such as Rieger BioCheck valves or Single Use Systems free of dead space
- reliable sampling

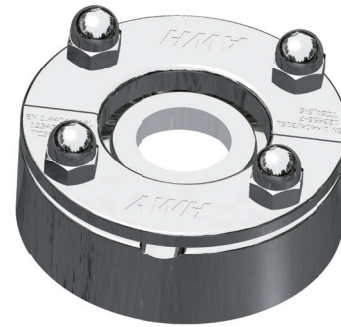


AWH-Connect  
Application Examples

## Also ideal as a connection for

- sight glasses
- sight glass lights
- filters
- valves
- dip tube
- pH probes
- measuring instruments (pressure, temperature, filling level, ...)
- ...

The application possibilities of the AWH-Connect are almost endless!



AWH-Connect with Sight Glass

## Technical data

### Suitable for clamp connections

DIN 32676 - series A, B, C  
 ISO 2852  
 BS 4825  
 ASME-BPE

### Pipe standards and sizes

|                                  |                  |
|----------------------------------|------------------|
| DIN 11850 / 11866 series A       | DN10 - DN100     |
| DIN EN ISO 1127 / 11866 series B | DN13,5 - DN114,3 |
| ASME-BPE / 11866 series C        | 1/2" - 4"        |
| SMS 3008                         | 12 - 102         |

### Material

|                         |   |
|-------------------------|---|
| Welded flange           | 316L (1.4435)<br>BN2 (Deltaferrit ≤ 1%) |
| Split ring              | 316L (1.4404)                           |
| Threaded bolts and nuts | A4-50 / A4-70                           |

### Surfaces

|                                  |             |
|----------------------------------|-------------|
| In contact with product (inside) | Ra ≤ 0,5 µm |
| Other surfaces                   | Ra ≤ 1,2 µm |

### Operating pressure

-1 / + 7 bar

### Operating temperature

-80 °C / +200 °C

## Approvals

Design test certificate from TÜV Nord according to PED 97/23/EC and AD2000 regulations, as well as PED 97/23/EC and EN 13445.





Armaturenwerk Hötensleben GmbH  
Schulstr. 5-6  
D-39393 Hoetensleben

Tel.: +49 39405 92-0  
Fax: +49 39405 92-111  
e-mail: [info@awh.de](mailto:info@awh.de)  
<http://www.awh.eu>

## NEUMO-Ehrenberg-Group

